

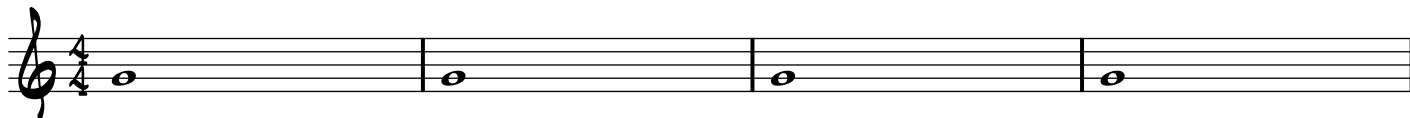
Spontaneous Combustion

A Worksheet for Blues in Bb Concert

Cannonball Adderley

This tune is a blues. The blues is usually 12 bars long.

When we first started playing along with the recording we were outlining the form of the blues by playing the basic chord notes in the correct place, like this:



Then we learned the basic skeleton of the head (remember that the "head" of a tune is the main melody):



Then we added this fancy turn to the first part of the head, which makes it sound extra hip and cool:



Then we played the scale that goes with this blues tune - we know that this head (melody) uses a lot of the same notes in this scale:



You can use a good rhythmic idea and play it over any combination of notes in the scale:



Here's another example of an idea with cool rhythm that can be played all over this one scale:

