

My Little Suede Shoes Etude for Eb Saxophone

Charlie Parker, arr. AEGriffiths

Jazz tunes are typically performed in this way:

1. The Head of the tune is played (the Head is the main melody of the tune).
2. Then any number of Solo Choruses will be played. These solos are new melodies that the player creates.
3. After all the Solo Choruses, the Head is played again and the tune ends.

Below is the Head to this tune, then a written Solo Chorus, and then blank staff paper for you to write your own Solo Chorus.

Head D- G7 C D- G7 C

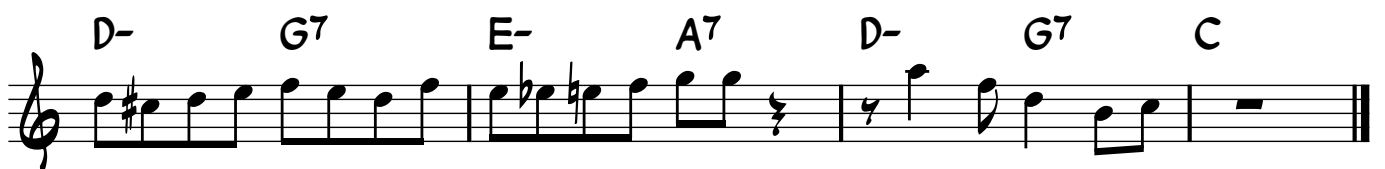
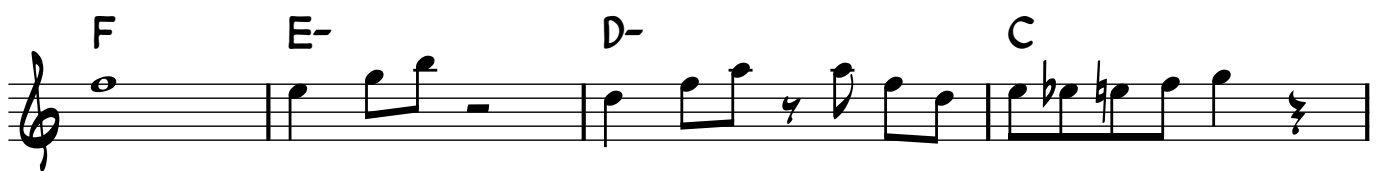
D- G7 E- A7 D- G7 1. C 2.

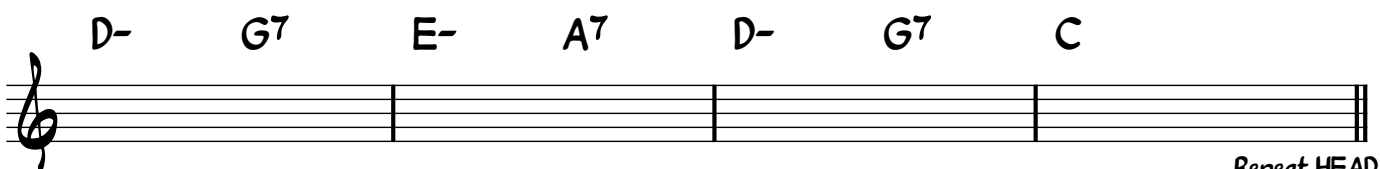
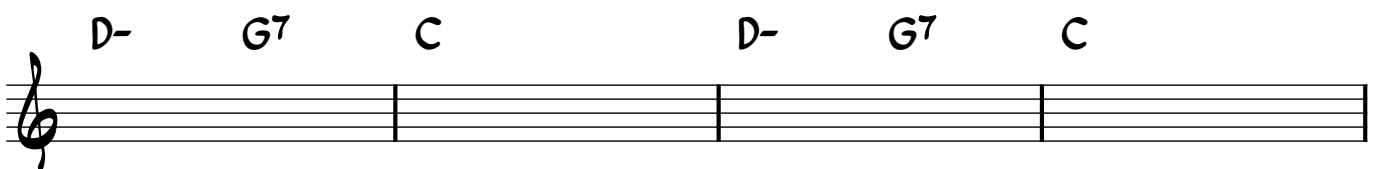
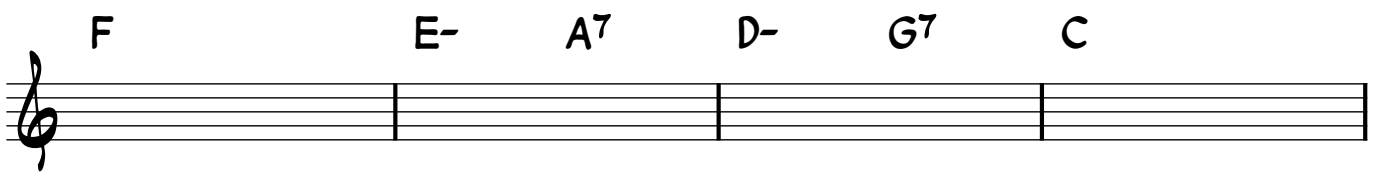
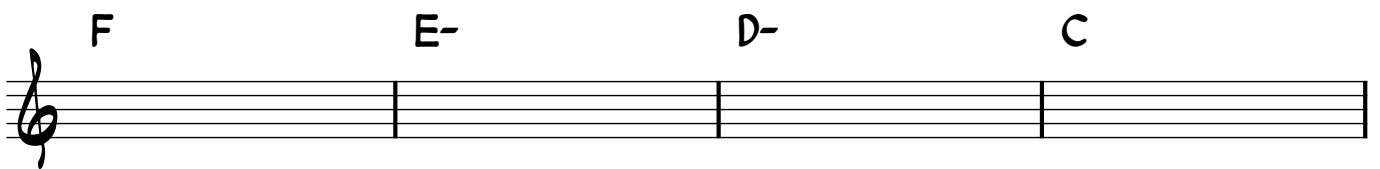
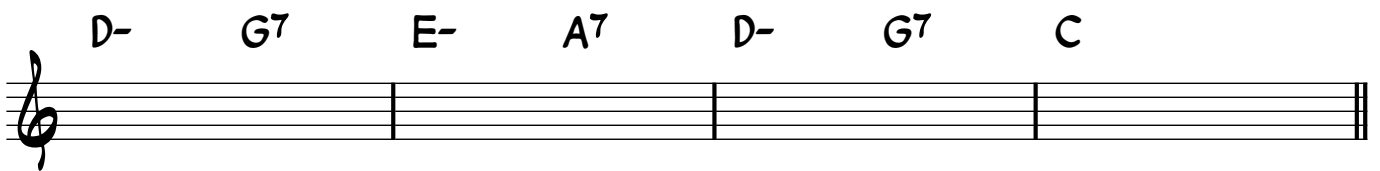
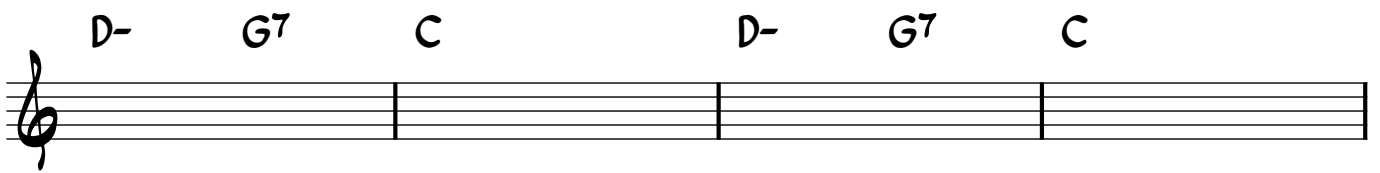
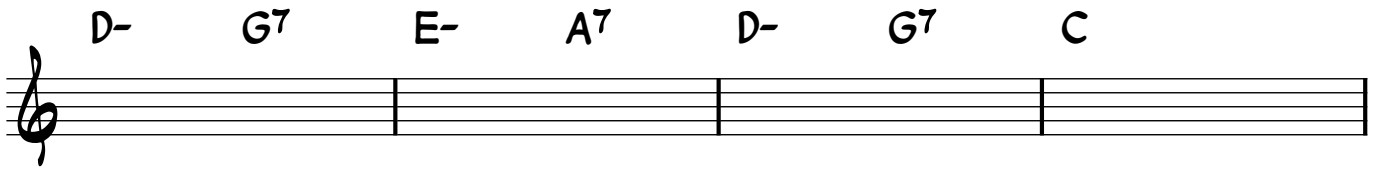
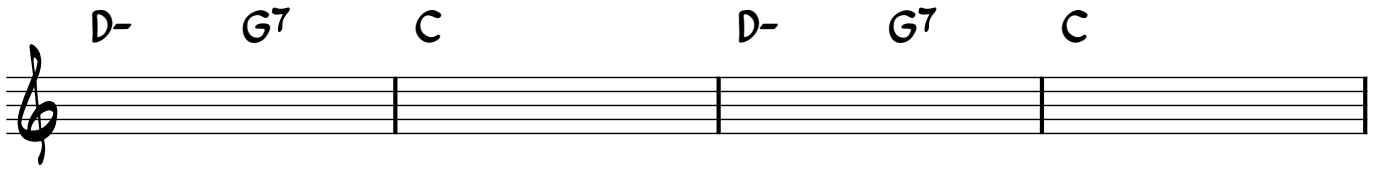
F E- D- C

F E- A7 D- G7 C

D- G7 C D- G7 C

D- G7 E- A7 D- G7 C

1st Solo Chorus

2nd Solo Chorus*Repeat HEAD and end*