

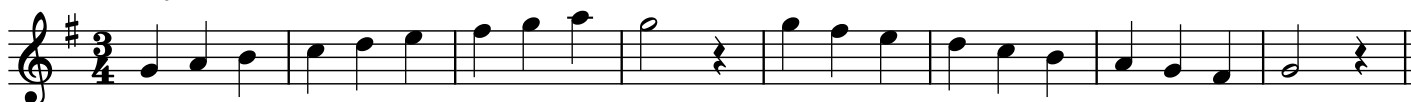
# 1-0.3 Scale Patterns in G Major

The **KEY SIGNATURE** appears just after the treble clef at the beginning of each line of music and tells us which sharps (#) and flats (b) to play throughout.

The key signature on this page shows one sharp on the line for the note "F."

This means that every note "F" on this page must be played as an "F#."

## G Major Scale



## G Major Arpeggio



## Step-wise 3rds in G Major



## Broken 3rds in G Major



## Menuet by JS Bach

