

5.0 Diatonic Patterns for Swing Style:

Scale fragments, step-wise thirds, and triads

(9 major keys for saxophone)

AEGriffiths

C Major

Seven staves of musical notation for C Major. The first staff is labeled 'C Major'. The notation includes scale fragments, step-wise thirds, and triads. The first four staves show patterns with accents (^) over the notes. The fifth and sixth staves show patterns with accents (^) over the notes. The seventh staff shows a pattern with a bar line and a double bar line at the end.

F Major

Three staves of musical notation for F Major. The first staff is labeled 'F Major'. The notation includes scale fragments, step-wise thirds, and triads. The first three staves show patterns with accents (^) over the notes.

The image displays a musical score for a piece in Bb Major, consisting of 11 staves of music. The notation is written in treble clef with a key signature of two flats (Bb Major). The music features a variety of rhythmic patterns, including eighth and sixteenth notes, often beamed together. Many notes are marked with an accent (^) above them. The score includes several measures with rests and ends with a double bar line and repeat dots. The fifth staff is explicitly labeled "Bb Major".

Eb Major (low)

Musical notation for the *Eb Major (low)* exercise, consisting of seven staves. The notation is in treble clef with a key signature of two flats (Bb and Eb). The exercise features a sequence of eighth and sixteenth notes, often beamed together, with accents (^) placed above various notes. The first staff begins with a quarter rest followed by a quarter note. The second staff ends with a double bar line. The third staff begins with a quarter rest followed by a quarter note. The fourth staff begins with a quarter rest followed by a quarter note. The fifth staff begins with a quarter rest followed by a quarter note. The sixth staff begins with a quarter rest followed by a quarter note. The seventh staff begins with a quarter rest followed by a quarter note and ends with a double bar line.

Eb Major (high)

Musical notation for the *Eb Major (high)* exercise, consisting of three staves. The notation is in treble clef with a key signature of two flats (Bb and Eb). The exercise features a sequence of eighth and sixteenth notes, often beamed together, with accents (^) placed above various notes. The first staff begins with a quarter rest followed by a quarter note. The second staff begins with a quarter rest followed by a quarter note. The third staff begins with a quarter rest followed by a quarter note and ends with a double bar line.

The first four staves of music are in G-flat major (three flats). They feature a consistent eighth-note rhythmic pattern with accents (^) on the notes. The first staff has four measures, the second and third have four measures each, and the fourth has four measures ending with a double bar line and repeat sign.

Ab Major

The next six staves of music are in A-flat major (four flats). They continue the eighth-note rhythmic pattern with accents (^) on the notes. The fifth staff has four measures, the sixth has four measures, the seventh has four measures, the eighth has four measures, the ninth has four measures, and the tenth has four measures ending with a double bar line and repeat sign.

G Major

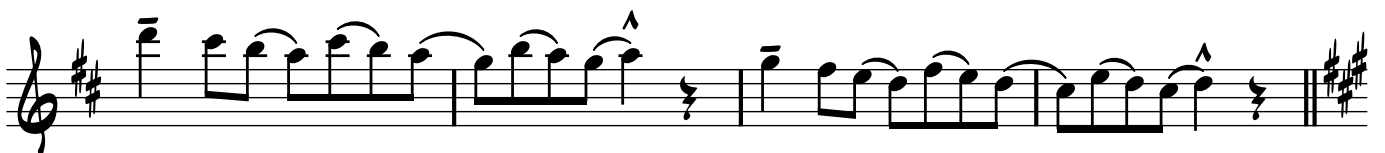
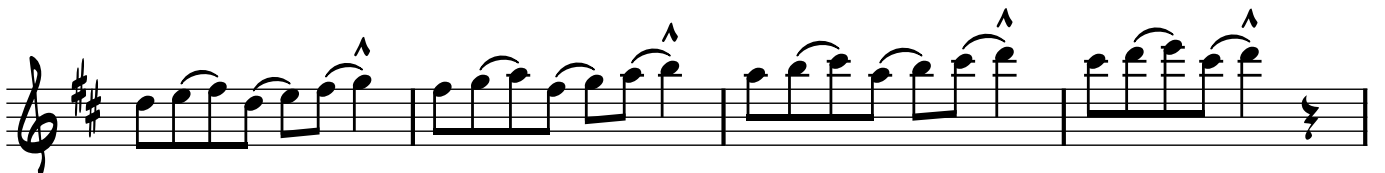
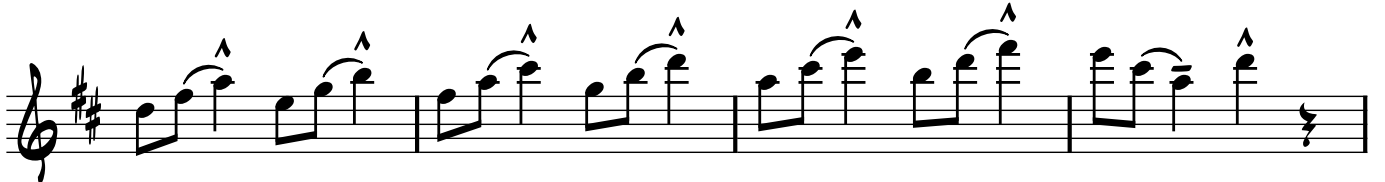
Seven staves of musical notation in G Major. The first six staves contain a sequence of eighth-note patterns with accents (^) on the notes. The seventh staff concludes the section with a key signature change to D Major, indicated by a sharp sign on the F line.

D Major (low)

Four staves of musical notation in D Major (low). The notation continues with eighth-note patterns and accents (^) on the notes, maintaining the melodic style of the previous section.



D Major (high)



A Major

Musical notation for the A Major scale, consisting of seven staves. The key signature is three sharps (F#, C#, G#). The notation includes slurs and accents (^) over the notes. The first six staves show the ascending and descending scales with slurs and accents. The seventh staff shows the scale with a double bar line and a key signature change to E Major (two sharps).

E Major (low)

Musical notation for the E Major (low) scale, consisting of four staves. The key signature is two sharps (F#, C#). The notation includes slurs and accents (^) over the notes. The first three staves show the ascending and descending scales with slurs and accents. The fourth staff shows the scale with a double bar line.



E Major (high)

